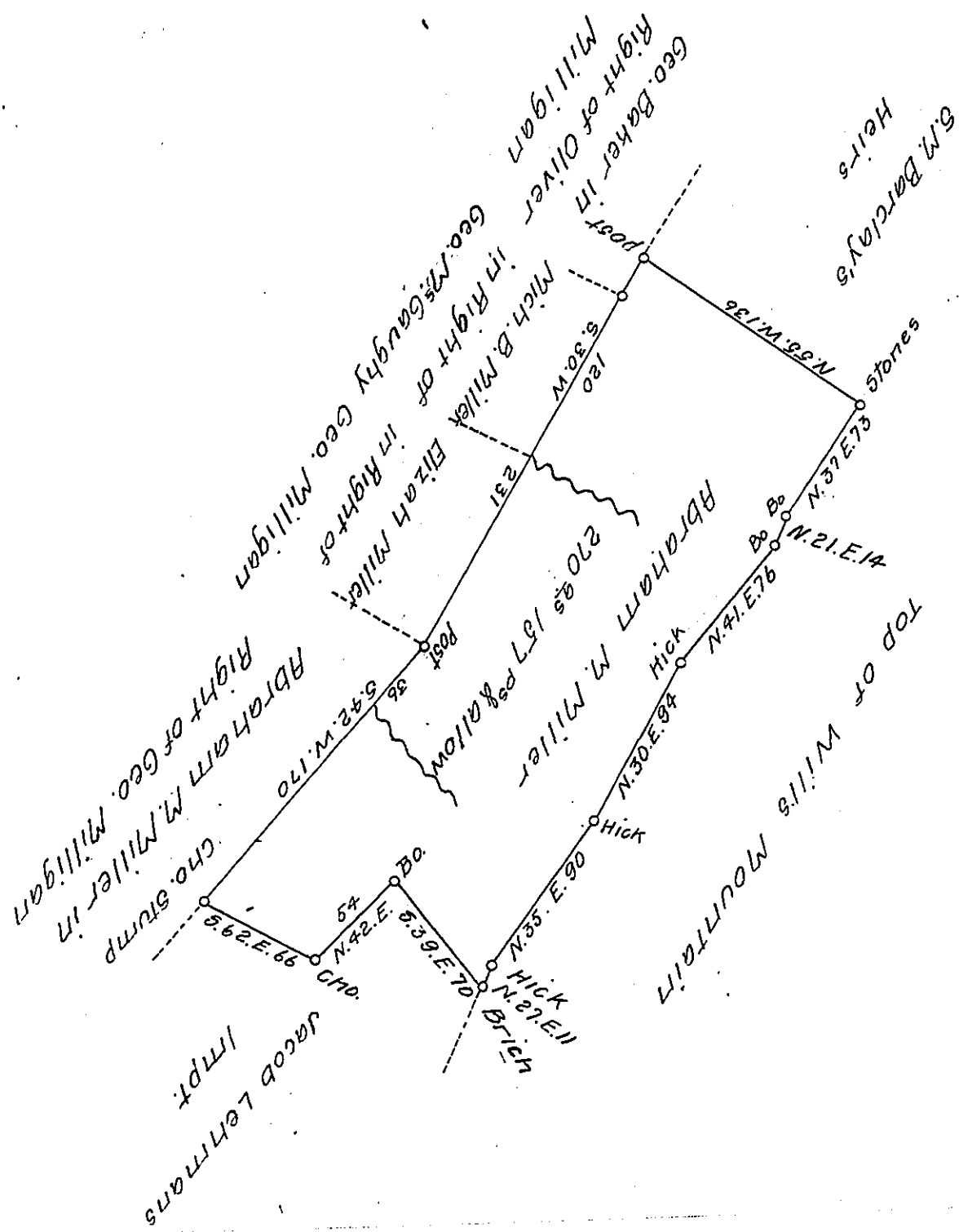


FORM NO. 1.



Situate on the West side of Willis Mountain in Harrison Township Bedford County containing 270 Acres 157 perches And the Usual Allowance of Six per cent for Roads surveyed the 17th day of Feby A.D. 1868. In pursuance of a Warrant dated the 4th day of Feby A.D. 1868 for 315^{ac}

Sam^l Ketterman D.S.

To Jacob M. Campbell Esq^r

S. G.

Approved of the 10th day of May 1868

P^r Donahoe D.S.

IN TESTIMONY that the above is a copy of the original remaining on file in the Department of Internal Affairs of Pennsylvania, made conformably to an Act of Assembly approved the 16th day of February 1833, I have hereunto set my hand and caused the Seal of said Department to be affixed at Harrisburg, this twenty-eighth day of August 1907

Henry Houck
Secretary of Internal Affairs.